



*Mookie Betts*  
2018 MVP  
**MOOKIE  
BETTS**  
50



**2020 SEASON**





## ***CONTENTS***

### **BBCOR**

pg. 5

### **USA BASEBALL**

pg. 8

### **SENIOR YOUTH USSSA**

2-3/4" pg. 12

2-5/8" pg. 13

### **TEE BALL**

pg. 14

### **TRAINERS**

pg. 15

### **CUSTOM PRO-FIT WOOD**

pg. 17

### **PRO-FIT WOOD**

pg. 18

### **ADULT WOOD**

pg. 19

### **COMPOSITE WOOD**

pg. 20

### **WOOD TRAINERS**

pg. 20

### **FASTPITCH**

pg. 22

### **SLOWPITCH**

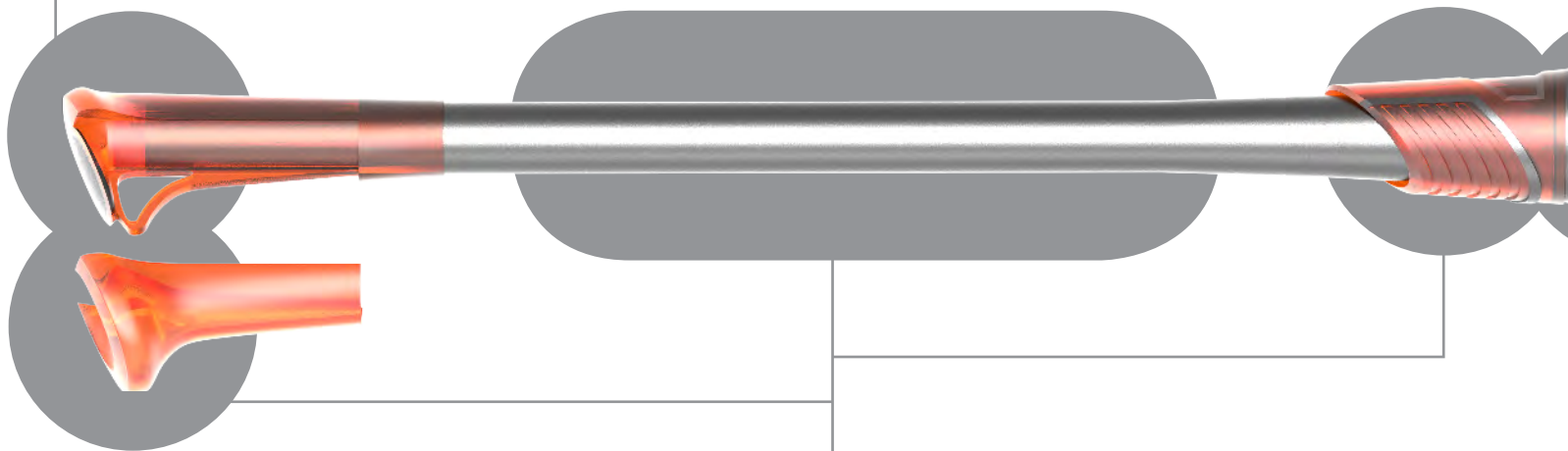
pg. 24

# BUILT FOR YOUR SWING

## AXE™ HANDLE

Our patented handle unlocks the full potential of your swing, so you can hit the ball harder and farther, more often. Choose our Standard Axe Handle for maximum speed and control, or step up to our Pro Axe Handle for more whip and freedom

- ALL MODELS



## 1-PIECE

Our one-piece, premium alloy bats come ready to perform to the top of the allowable limit with a barrel that never needs to be rotated.

- ELITE ONE | ORIGIN | HERO | DANIELLE LAWRIE

## 2-PIECE

Our two-piece composite and hybrid bats pair our hottest barrels with our fastest-swinging composite handle for more whip, speed, and confidence through the zone.

- AVENGE | ELITE

## VIBRATION CANCELING SYSTEM™

Our three-point VCS works in tandem to reduce and stop vibrations before they reach your hands, giving you more comfort and confidence at the plate.

## ENERGY ABSORPTION COLLAR

An energy-absorbing elastomer collar is strategically placed at the connection point where vibrations transfer from the barrel to the handle.

- AVENGE | ELITE

## FLEX HANDLE

Our lightweight composite handle is optimized for performance, whip, and comfort.

- AVENGE | ELITE

## ENDOGRID™

Vibration-reducing elastomer, built into the Axe Handle, provides the last line of defense by buffering the bottom hand from stings.

- AVENGE | AVENGE LITE | ELITE | ELITE ONE | ORIGIN

## PROVEN PERFORMANCE



MAX BAT SPEED

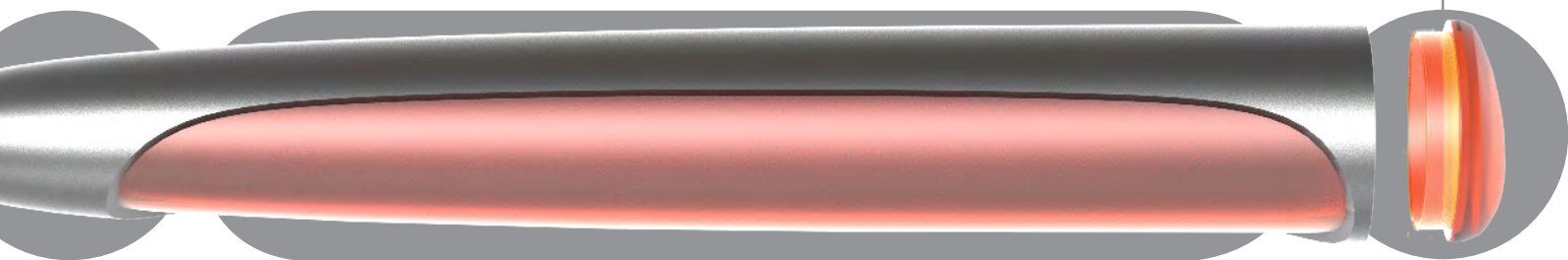


MORE CONTROL  
THROUGH THE ZONE

## HYPERWHIP™ END CAP

Our new sleek design and lighter carbon-fiber construction saves even more weight at the tip of the bat for a faster, more efficient swing and larger barrel.

- MOST NON-WOOD MODELS



## ENGINEERED HITTING ZONE

### CHARGED CARBON™

Our most advanced carbon composite relies on a proprietary additive in the resin to keep individual layers thin and hot without sacrificing durability, meaning your barrel can perform longer and closer to the allowable limit.

- AVENGE | AVENGE ONE | AVENGE LITE

### MX8™ ALLOY

Our strongest alloy yet undergoes a special heat treatment to increase its strength and allow it to flex without denting or cracking.

- ELITE | ELITE ONE | ELEMENT

### LPI™ ALLOY

Advanced-strength alloy comes ready to hit, with performance and durability to last the lifetime of your bat.

- ORIGIN | HERO | DANIELLE LAWRIE

### POWER GAP BARREL

Our newest and most responsive composite barrel for softball rides on a thin air gap that acts as both a launching pad and a governor, ensuring better performance and harder hits no matter where you make contact.

- AVENGE FASTPITCH | AVENGE SLOWPITCH ASA

### TRI-FLEX BARREL

Our most trusted composite barrel uses two C-shaped slip planes to mimic the performance of a thin-wall bat while maintaining the strength and durability elite hitters require.

- AVENGE USSSA BASEBALL | AVENGE SLOWPITCH USSSA

### VARIABLE LAYER

Our precise, composite-trimming technique removes material from both ends of the bat for a faster, more balanced swing and a lighter construction.

- AVENGE BBCOR, USA & USSSA

### VARIABLE WALL

Every millimeter of our variable-wall alloy barrels is manufactured and tuned for optimal performance and speed.

- ELITE BBCOR & USA | ELITE ONE BBCOR & USA



**HARDER HITS,  
MORE OFTEN**



**FIT FOR YOUR SWING**

# BUILDING THE WORLD'S BEST BAT FOR YOUR SWING

Now available with Standard and Pro Axe Handles



## CHOOSE THE HANDLE THAT'S RIGHT FOR YOU

### STANDARD

Our most popular handle for all swing types, featuring a flat, full-length backside for more control and a deeper connection through your palm.

#### **SPEED + CONTROL**

- Stay on plane longer
- Get to the ball faster
- More control and adjustability

### PRO

Our newest handle for high-level power hitters, featuring a slightly rounded backside for more whip and freedom through the zone.

#### **SPEED + POWER**

- Release the barrel faster
- Get more extension
- More whip and freedom

## AVENGE -3



L140H | 2-5/8" DIAMETER | 31/28 32/29 33/30 34/31

- 2-piece composite construction
- New variable layer Charged Carbon barrel – our largest and most balanced for BBCOR
- Lightweight composite handle for more whip and less vibration
- Standard Axe Handle for speed + control
- Vibration-canceling VCS connection piece
- Endogrid technology for less bottom-hand vibration
- New HyperWhip Composite Cap
- 1-year limited warranty



L140H-BJ | 2-5/8" DIAMETER | 32/29 33/30 34/21

- Also available with Pro Axe Handle for speed + power

## ELITE -3



L130H | 2-5/8" DIAMETER | 30/27 31/28 32/29 33/30 34/31

- 2-piece, balanced hybrid construction
- New variable wall MX8 Alloy barrel
- Lightweight composite handle for more whip and less vibration
- Standard Axe Handle for speed + control
- Vibration-canceling VCS connection piece
- Endogrid technology for less bottom-hand vibrations
- New HyperWhip Composite Cap
- 1-year limited warranty



L130H-BJ | 2-5/8" DIAMETER | 32/29 33/30

- Also available with Pro Axe Handle for speed + power

**ELITEONE -3**

L137H | 2-5/8" DIAMETER | 30/27 31/28 32/29 33/30 34/31

- 1-piece, balanced alloy construction
- New variable wall MX8 Alloy barrel
- Standard Axe Handle for speed + control
- Endogrid technology for less bottom-hand vibration
- New HyperWhip Composite Cap
- 1-year limited warranty

**ORIGIN -3**

L132G | 2-5/8" DIAMETER | 31/28 32/29 33/30

- 1-piece alloy construction
- LP1 Alloy barrel
- Standard Axe Handle for speed + control
- Endogrid technology for less bottom-hand vibration
- HyperWhip End Cap
- 1-year-limited warranty



# SPEED TRAINERS

Improve bat speed, increase exit velocity, and hit the ball farther with the only overload-underload training system designed for your swing.

Axe Bat's patented handle allows you to swing harder with more control while maximizing your results following one of four programs designed by Driveline Baseball, the leader in data-driven training. Get yours today!

## INTERNAL 8-WEEK STUDY RESULTS

COMPARISON	OVER/UNDER	CONTROL	% CHANGE
Exit Velocity - Tee (mph)	3.30	1.29	156%
Exit Velocity - Front Toss (mph)	4.80	1.02	371%
Launch Angle (°)	2.13	-1.48	244%



Includes booklet with four unique 12-week training programs

POWERED BY  
**DRIVELINE**  
BASEBALL



## AVENGE -10



L142H | 2-5/8" DIAMETER | 28/18 29/19 30/20 31/21 32/22

- 2-piece composite construction
- New variable layer Charged Carbon barrel – our largest and most balanced for USA Baseball
- Lightweight composite handle for more whip and less vibration
- Standard Axe Handle for speed + control
- Vibration-canceling VCS connection piece
- Endogrid technology for less bottom-hand vibration
- New HyperWhip Composite Cap
- 1-year limited warranty

## AVENGEONE -10



L164H | 2-5/8" DIAMETER | 28/18 29/19 30/20 31/21

- 1-piece composite construction
- New variable layer Charged Carbon barrel
- Standard Axe Handle for speed + control
- Endogrid technology for less bottom-hand vibration
- New HyperWhip Composite Cap
- 1-year limited warranty



## ELITE -5



L134H | 2-5/8" DIAMETER | 30/25 31/26 32/27

- 2-piece hybrid construction
- New variable wall MX8 Alloy barrel
- Lightweight composite handle for more whip and less vibration
- Standard Axe Handle for speed + control
- Vibration-canceling VCS connection piece
- Endogrid technology for less bottom-hand vibration
- New HyperWhip Composite Cap
- 1-year limited warranty

## ELITEONE -8, -10



L139H / L185H | 2-5/8" DIAMETER | -8: 30/22 31/23 32/24 | -10: 26/16\* 27/17\* 28/18 29/19 30/20 31/21

- 1-piece alloy construction
- New variable wall MX8 Alloy barrel
- Standard Axe Handle for speed + control
- Endogrid technology for less bottom-hand vibration
- New HyperWhip Composite Cap
- 1-year limited warranty

\*26" & 27" L185H with 2 1/2" diameter barrel, no Endogrid handle

## ORIGIN HYPERSPEED -10



L135G-HS | 2-1/2" DIAMETER | 27/17 28/18 29/19 30/20 31/21

- 1-piece alloy construction
- LP1 Alloy barrel
- Standard Axe Handle for speed + control
- New HyperWhip Composite Cap
- 1-year-limited warranty



# NEW TECH

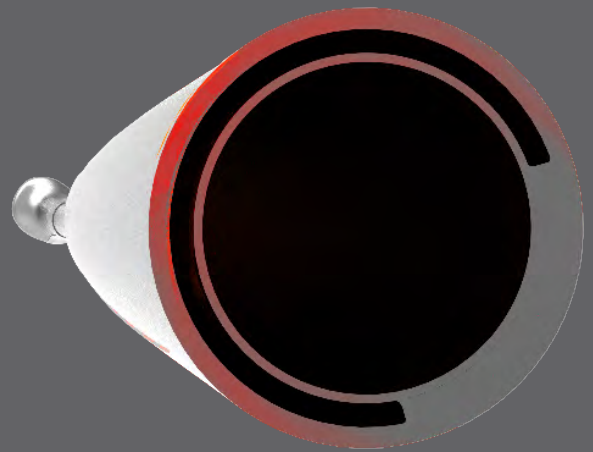
## **HYPERWHIP™ END CAP**

Upgraded look and an improved carbon-fiber construction make the newly designed HyperWhip End Cap lighter and faster than ever. The sleeker design enhances the weight-saving performance benefits of the angled profile, while also reducing the likelihood of mishits going into fair play off the end cap.



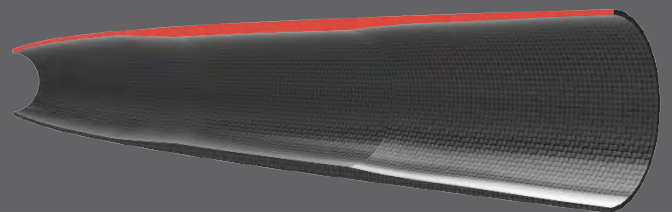
## **POWER GAP**

Softball takes the spotlight in 2020 with the debut of our new, patented Power Gap technology, an innovation that delivers the hottest and most responsive composite softball barrel we've ever made. Power Gap builds on our experience developing bats with golf club-like hitting faces, and uses a thin air gap — situated between a double-wall construction — as both a spring and a governor to ensure better performance and harder hits no matter where you make contact. The result is a larger sweet spot, more balanced swing weight, and more consistent performance to the top of the allowable limit.



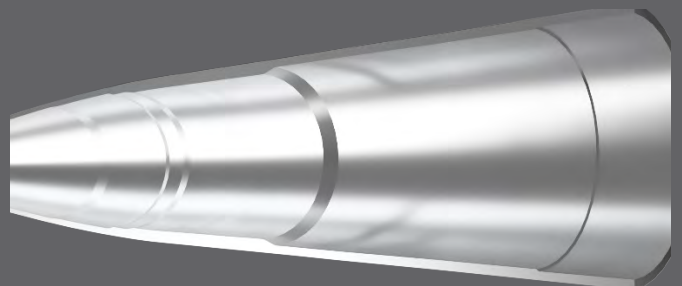
## **VARIABLE LAYER COMPOSITE**

Our new composite trimming technique removes material more precisely, reducing weight at both ends of the barrel for a faster swing, larger sweet spot, and lighter construction.



## **VARIABLE WALL ALLOY**

Advanced manufacturing processes allow us to machine every millimeter of our alloy barrels to the optimal depth for performance and speed.





## AVENGE -8, -10



L173H / L148H | 2-3/4" DIAMETER | -8: 30/22 31/23 32/24 | -10: 27/17 28/18 29/19 30/20 31/21

- 2-piece composite construction
- New variable layer, Charged Carbon Tri-Flex barrel
- Lightweight composite handle for more whip and less vibration
- Standard Axe Handle for speed + control
- Vibration-canceling VCS connection piece
- Endogrid technology for less bottom-hand vibration
- New HyperWhip Composite Cap
- 1-year limited warranty

## ELITEONE -10



L143H | 2-3/4" DIAMETER | 28/18 29/19 30/20 31/21 32/22

- 1-piece alloy construction
- Premium MX8 Alloy barrel
- Standard Axe Handle for speed + control
- Endogrid technology for less bottom-hand vibration
- HyperWhip End Cap
- 1-year limited warranty

2-3/4" BARREL

## ELITEONE JUNIOR BIG BARREL -10



L165H | 2-3/4" DIAMETER | 26/16 27/17

- 1-piece alloy construction
- Premium MX8 Alloy barrel
- Standard Axe Handle for speed + control
- HyperWhip End Cap
- Recommended for coach pitch
- 1-year limited warranty

## ORIGIN -10



L161G | 2-3/4" DIAMETER | 28/18 29/19 30/20 31/21

- 1-piece alloy construction
- LP1 Alloy barrel
- Standard Axe Handle for speed + control
- HyperWhip End Cap
- 1-year-limited warranty

## ELITEONE -10



L149H | 2-5/8" DIAMETER | 28/18 29/19 30/20 31/21

- 1-piece alloy construction
- Premium MX8 Alloy barrel
- Standard Axe Handle for speed + control
- Endogrid technology for less bottom-hand vibration
- HyperWhip End Cap
- 1-year limited warranty

2-3/4" BARREL

2-5/8" BARREL

## AVENGE -11



L166H | 2-¼" DIAMETER | 24/13 25/14 26/15

- 1-piece alloy construction
- LP1 Alloy barrel
- Youth Axe Handle reinforces proper grip, swing path
- HyperWhip End Cap
- Recommended for tee ball only
- 1-year limited warranty

## ORIGIN -11



L167H | 2-¼" DIAMETER | 24/13 25/14 26/15

- 1-piece alloy construction
- LP Alloy barrel
- Youth Axe Handle reinforces proper grip, swing path
- Recommended for tee ball only
- 1-year limited warranty

## HERO -11



L129H | 2-¼" DIAMETER | 24/13 25/14 26/15

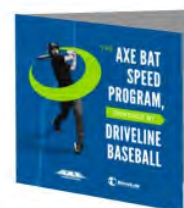
- 1-piece alloy construction
- LP Alloy barrel
- Youth Axe Handle reinforces proper grip, swing path
- Recommended for tee ball only
- 1-year limited warranty

## SPEED TRAINERS

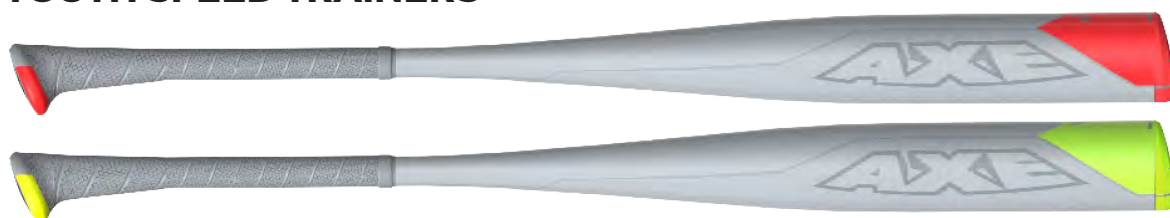


L160E | 2-5/8" DIAMETER | 32" 33" 34"

- 3 weighted training bats
- +20% barrel load, +20% handle load, -20% underload
- Premium composite underload bat can be used with soft toss
- 24 weeks of guided training from Driveline Baseball
- In-season and out-of-season training programs
- Recommended for high school and college hitters
- 120-day limited warranty



## YOUTH SPEED TRAINERS



L178G | 2-5/8" DIAMETER | 29" 30" 31"

- 2 weighted alloy training bats
- +20% barrel load, +20% handle load
- 24 weeks of guided training from Driveline Baseball
- In-season and out-of-season training programs
- Recommended for ages 9-13 (pre-high school)
- 120 day limited warranty



## LONG TRAINER



L184H | 2-5/8" DIAMETER | 37"

- Weighted, overlength alloy training bat
- Develops speed, control, and barrel awareness
- 24 weeks of guided training from Driveline Baseball
- In-season and out-of-season training programs
- Recommended for high school and college hitters
- 120 day limited warranty



# THE MOST ADVANCED WOOD BAT EVER



## New Pro-Fit Series from Axe Bat

*Made for today's elite players*

### INNOVATION

State-of-the-art, 3D machining process cuts bats precisely and consistently down to the millimeter with a single pass.

Newly developed Charged Finish, formulated with the strongest chemical bonds, meticulously applied in a seven-step process that protects the barrel with a harder, stronger shell.

*Mookie Betts*  
**2018 MVP**  
**MOOKIE**  
**BETTS**  
**50**



**ALL-STAR**  
**GEORGE**  
**SPRINGER**  
**4**  
*George Springer*



## MVP MB50 CUSTOM PRO-FIT MAPLE -3



L122H | 2-5/8" DIAMETER | 32" 33" 33.5" 34"

- MVP Mookie Betts' game bat model
- Made from single billet of pro-grade maple hardwood
- Proprietary, Charged Finish for improved hardness and durability
- Pro ink dot showing slope of grain
- Standard Axe Handle for speed + control
- Wrapped with Betts' preferred Lizard Skins™ grip tape
- Made in U.S.A.
- 30-day limited warranty

## GS4 CUSTOM PRO-FIT MAPLE -3



L123H | 2-5/8" DIAMETER | 32" 33" 33.5" 34"

- Series MVP George Springer's game bat model
- Made from single billet of pro-grade maple hardwood
- Proprietary, Charged Finish for improved hardness and durability
- Pro ink dot showing slope of grain
- Standard Axe Handle for speed + control
- Made in U.S.A.
- 30-day limited warranty

### PERFORMANCE

Steel-hardening process compresses the wood grain, making it harder and denser, so the ball jumps off the barrel.

Patented Axe Handle lets you swing faster with more barrel control for harder, more consistent contact.

### QUALITY

Made from hard-split, pro-grade hard maple, the same premium wood used by the pros.

**AVAILABLE WITH STANDARD AND PRO AXE HANDLES**



## 271 PRO-FIT MAPLE -3



L124H | 2-5/8" DIAMETER | 32" 33" 33.5" 34"

- Made from single billet of pro-grade maple hardwood
- Balanced 271 barrel for speed and power
- Proprietary, Charged Finish for improved hardness and durability
- Cupped for balance
- Pro ink dot showing slope of grain
- Standard Axe Handle for speed + control
- Made in U.S.A.



L124H-BJ | 2-5/8" DIAMETER | 32" 33" 33.5" 34"

- Also available with Pro Axe Handle for speed + power

## 243 PRO-FIT MAPLE -3



L125H | 2-5/8" DIAMETER | 32" 33" 33.5" 34"

- Made from single billet of pro-grade maple hardwood
- Full 243 barrel for more power and end-load
- Proprietary, Charged Finish for improved hardness and durability
- Cupped for balance
- Pro ink dot showing slope of grain
- Standard Axe Handle for speed + control
- Made in U.S.A.



L125H-BJ | 2-5/8" DIAMETER | 32" 33" 33.5" 34"

- Also available with Pro Axe Handle for speed + power

## 271 PRO MAPLE -3



L118 | 2-5/8" DIAMETER | 32" 33" 33.5" 34"

- Made from single billet of pro hard maple
- Balanced 271 barrel for speed and power
- Cupped for balance
- Pro ink dot showing slope of grain
- Standard Axe Handle for speed + control
- Made in U.S.A.

## 243 PRO MAPLE -3



L119G | 2-5/8" DIAMETER | 32" 33" 33.5" 34"

- Made from single billet of pro hard maple
- Full 243 barrel for more power and end-load
- Cupped for balance
- Pro ink dot showing slope of grain
- Standard Axe Handle for speed + control
- Made in U.S.A.



## MAPLE COMPOSITE -3



L180H | 2-5/8" DIAMETER | 31" 32" 33" 34"

- Barrel made from pro hard maple
- Improved internal barrel construction for more durability and a stronger feel
- Composite handle reduces vibration and breakage
- Carbon connector provides reinforcement at highest stress point for improved durability
- BBCOR-certified
- 120-day limited warranty



L180F-GS4 | 2-5/8" DIAMETER | 31" 32" 33" 34"

GEORGE SPRINGER EDITION

- Barrel made from pro hard maple
- Composite handle reduces vibration and breakage
- Carbon connector provides reinforcement at highest stress point for improved durability
- BBCOR-certified
- 120-day limited warranty

## COMPOSITE WOOD TECHNOLOGY



### AXE™ HANDLE:

Our patented handle unlocks the full potential of your swing, so you can hit the ball harder and farther, more often.

### COMPOSITE HANDLE:

Composite handle maximizes bat whip for greater barrel speed at the point of contact.

## FUNGO



L10535F | 35" | 22-23 OZ.

- Maple composite construction for durability and performance
- 35-inch fungo barrel for whip and control
- Composite foam handle with rubberized coating for better grip, more comfort
- Standard Axe Handle for precision and control when hitting infield/outfield

## YOUTH HARDWOOD -5



L116F-GS4 | 2-1/2" DIAMETER | 29/24 30/25 31/26

GEORGE SPRINGER EDITION



L116F | 2-1/2" DIAMETER | 29/24 30/25 31/26

- Laminate hardwood construction for improved durability
- Big-barrel profile
- Cupped for balance
- Standard Axe Handle for speed + control
- 120-day limited warranty



### CARBON CONNECTOR:

The carbon connector adds unmatched durability to our single billet maple barrel by placing reinforcement at the highest stress point.

### HARD MAPLE:

Premium grade North American Hard Maple.

## ONE-HAND TRAINER



L10618F / L10622F | 18" / 22" | 17-18 OZ. / ~20 OZ.

- Hardwood composite construction
- Rubberized coating on handle for better grip, more comfort
- Standard Axe Handle trains barrel control and awareness
- Encourages quick hand path for hitters of all ages and abilities

AVENGELITE  
AVENGE POWER GAP



ISA APPROVED

## AVENGE POWER GAP -9, -10, -11



L150H | 2-1/4" DIAMETER

-9: 32/23 33/24 34/25 | -10: 30/20 31/21 32/22 33/23 34/24 | -11: 29/18 30/19 31/20 32/21 33/22

- 2-piece composite construction
- New Power Gap barrel expands sweet spot and produces hotter, more consistent performance
- Fastpitch Axe Handle for speed + control
- Vibration-canceling VCS connection piece
- Endogrid technology for less bottom-hand vibration
- New HyperWhip Composite Cap
- 1-year limited warranty

## AVENGELITE -11



L169H | 2-1/4" DIAMETER | 28/17 29/18 30/19 31/20 32/21 33/22

- 2-piece composite construction
- Premium Charged Carbon barrel
- Fastpitch Axe Handle for speed + control
- Vibration-canceling VCS connection piece
- Endogrid technology for less bottom-hand vibration
- New HyperWhip Composite Cap
- 1-year limited warranty

## ELEMENT -12



L151H | 2-1/4" DIAMETER | 28/16 29/17 30/18 31/19 32/20 33/21

- 1-piece alloy construction
- Premium MX8 Alloy barrel
- Fastpitch Axe Handle for speed + control
- Endogrid technology for less bottom-hand vibration
- HyperWhip End Cap
- 1-year limited warranty

## DANIELLE LAWRIE -12



L136H | 2-1/4" DIAMETER | 27/15 28/16 29/17 30/18 31/19 32/20

- 1-piece alloy construction
- LP1 Alloy barrel
- Fastpitch Axe Handle for speed + control
- HyperWhip End Cap
- Endorsed by 2x National Player of the Year Danielle Lawrie
- 1-year limited warranty

## SOFTBALL SPEED TRAINERS



L179G | 2-1/4" DIAMETER | 31" 32" 33" 34"

- 2 weighted alloy training bats
- +20% barrel load, +20% handle load
- 24 weeks of guided training
- In-season and out-of-season training programs
- Also available for slowpitch (34" only)
- Recommended for high school and college hitters
- 1-year limited warranty



## AVENGE POWER GAP USA SOFTBALL (ASA) -6, -7, -8



L155H | 2-1/4" DIAMETER | -6: 34/28 | -7: 34/27 | -8: 34/26

- 2-piece composite construction
- New Power Gap barrel expands sweet spot and produces hotter, more consistent performance
- Slowpitch Axe Handle for speed + control
- Vibration-canceling VCS connection piece
- New HyperWhip Composite Cap
- Approved for USA Softball (ASA), ISF
- 1-year limited warranty



## AVENGE USSSA -6, -7, -8



L154H | 2-1/4" DIAMETER | -6: 34/28 | -7: 34/27 | -8: 34/26 | BALANCED

- 2-piece composite construction
- New variable layer, Charged Carbon Tri-Flex barrel
- Balanced swing weight
- Slowpitch Axe Handle for speed + control
- Vibration-canceling VCS connection piece
- New HyperWhip Composite Cap
- Approved for USSSA, NSA, and ISA
- 1-year limited warranty

ISA APPROVED



L154H-E | 2-1/4" DIAMETER | -6: 34/28 | -7: 34/27 | END-LOADED

- Also available in end-loaded
- One full ounce of end load
- Approved for USSSA, NSA, and ISA

ISA APPROVED



## PRO HARD MAPLE SOFTBALL



L191F | 2-1/4" DIAMETER | 34"

- Made from single billet of pro hard maple
- Slowpitch barrel profile for speed and power
- Cupped for balance
- Approved for play in all leagues; stamped for USA Softball (ASA) slowpitch
- Made in U.S.A.
- Drop -5 to -6





**NATIONAL SALES MANAGER**

**Jerry Hink** 253-250-6975 | jhink@badensports.com

**SALES SUPPORT**

**Sam Drake** 253-883-5163 | sam@axeabat.com

**FOR CANADA ORDERS**

**Jon Konigsberg** 514-341-0206 | canada@axeabat.com

## NORTHERN REGIONS

**AK, ID, MT, OR, WA, WY**

**Brandon Williams**

425-757-3247

bwilliams@badensports.com

**IA, KS, MN, ND, NE, SD**

**Jerry Hink**

253-250-6975

jhink@badensports.com

**IL, IN, KY, MI, MO, OH, WI**

**Bill Leark**

708-701-1875

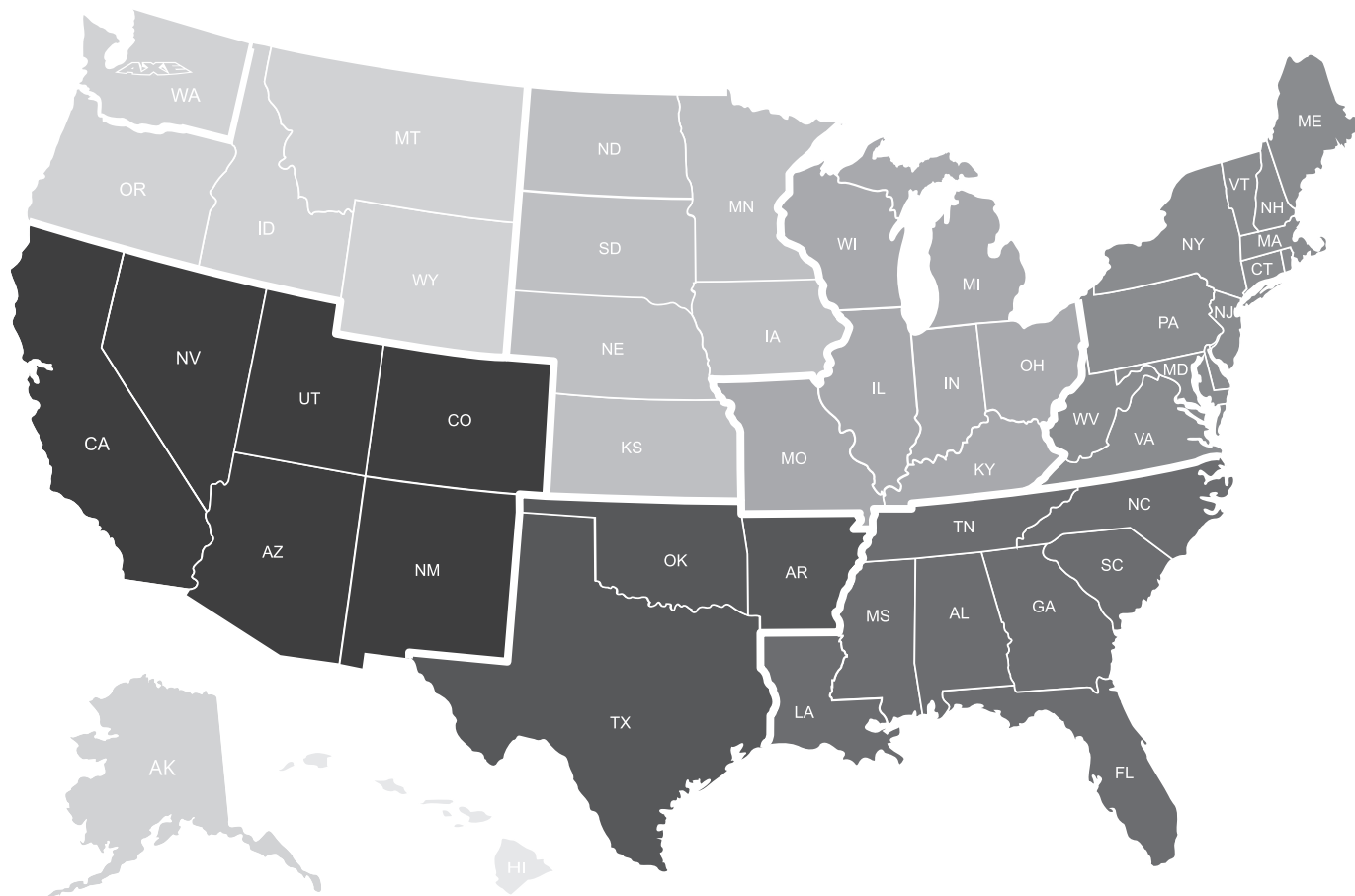
bleark@badensports.com

**CT, DC, DE, MA, MD, ME, NH,  
NJ, NY, PA, RI, WV, VA, VT**

**Jeff Simon**

484-888-3331

jeffs@badensports.com



## SOUTHERN REGIONS

**HI**

**Todd Tice**

253-883-5165

toddt@badensports.com

**AZ, CA, CO, NM, NV, UT**

**Jeremy Schlosser**

206-856-7567

jeremys@badensports.com

**AR, OK, TX**

**Matt Nutt**

682-201-4813

mnutt@badensports.com

**AL, FL, GA, LA, MS, NC, SC, TN**

**Jake Permuter**

678-634-3799

jake@axeabat.com

**Jerry Hink**

253-250-6975

jhink@badensports.com

SALES TERRITORIES

**YOUR BEST SWING  
STARTS NOW.**



AXEBAT.COM